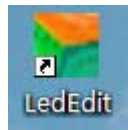


# The LedEdit Software Instructions

## 1, Install the software to PC and open English version:

When we installed The LedEdit Software, on the desktop we can see following icon:

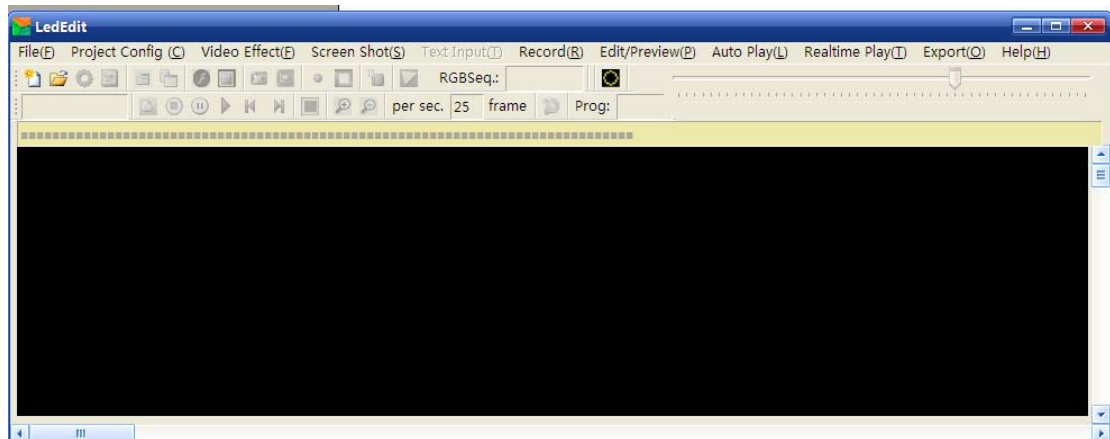


Please Double-click it, then we into following interface:



In this interface, we can change the language, follows:

We can Click  -> "语言 (Language)" -> "英文 (Language)", the interface will change to this:

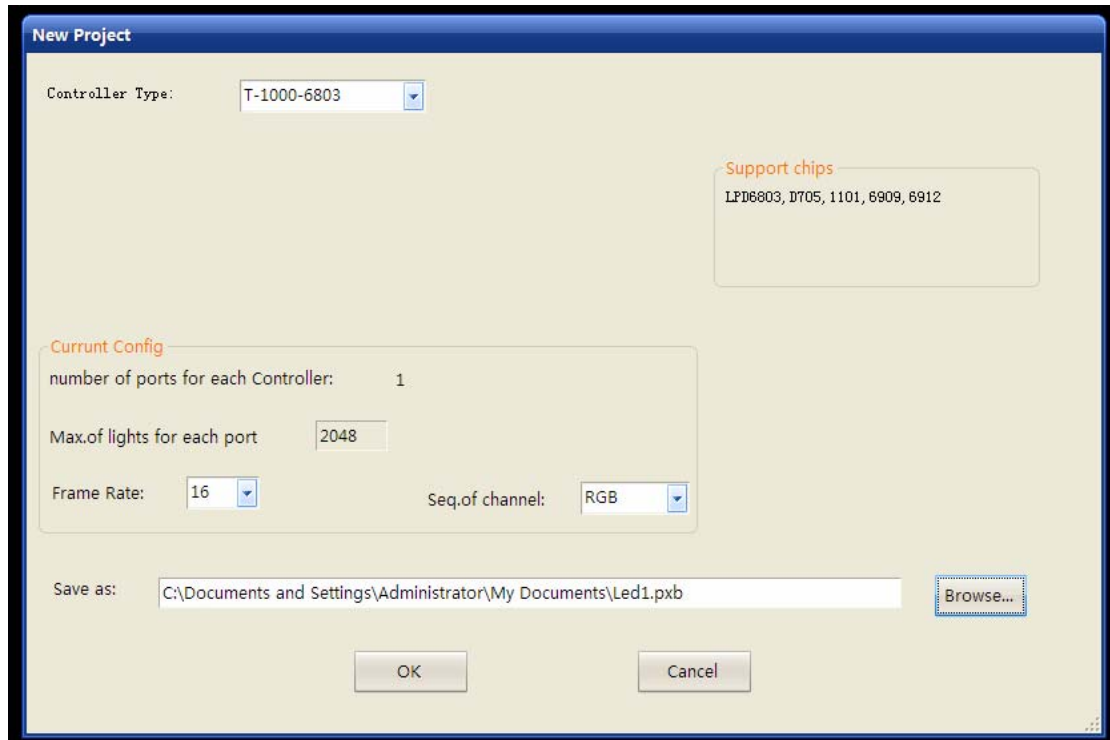


The English interface fit to us to use.

## 2, Make effect Program:

We can click the "File" in the English interface, do as following:

File (F) —> "new project"—> it will appear this interface:



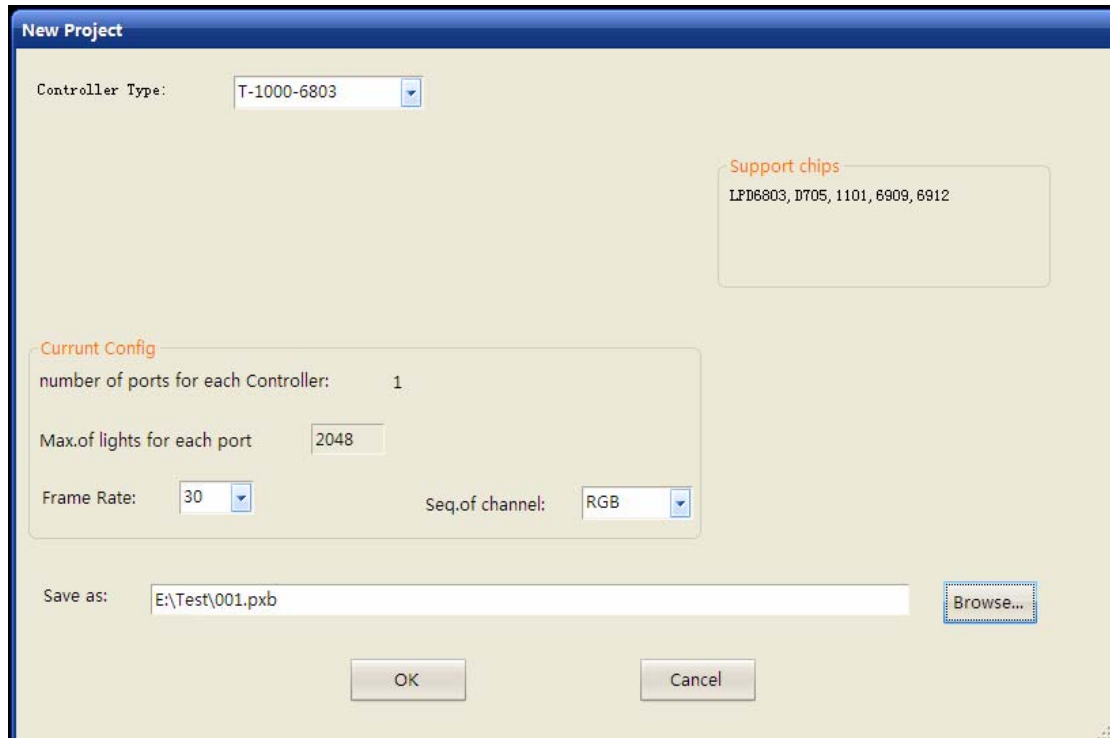
**Controller Type:** you can select the "Controller Type". If you use the SW-CP2000 controller, you must select the "T-1000-6803"; If you use the SW-CP4000 controller, you must select the "T-4000-6803"; If you use the SW-CP8000 controller, you must select the "T-8000B-6803".

**Frame Rate:** you can select the corresponding number. If you want to the speed faster, you can select large number; If you want to speed slower, you can select small number. We recommend you select the 30.

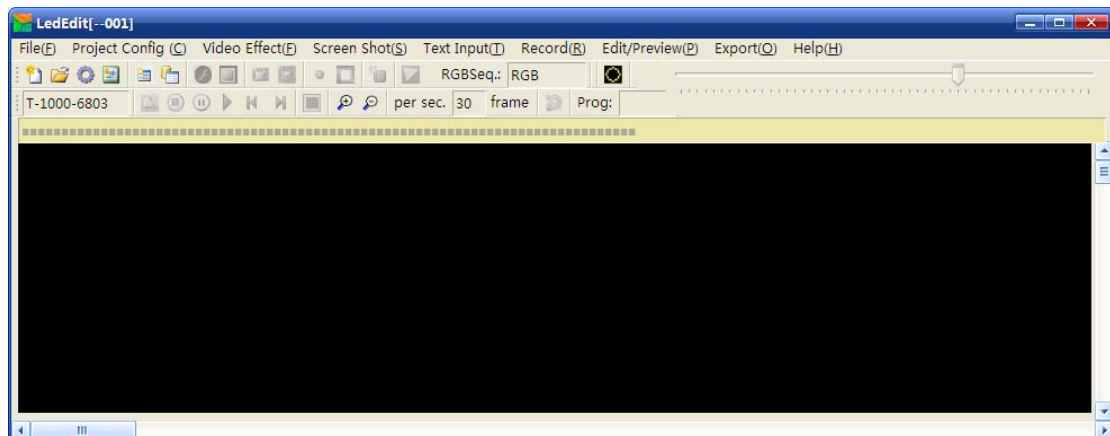
**Save as:** this appears to you saved address. You can change the "saved address" by "Browse".

## We use the T-1000-6803 controller for Example

We can set as follow:

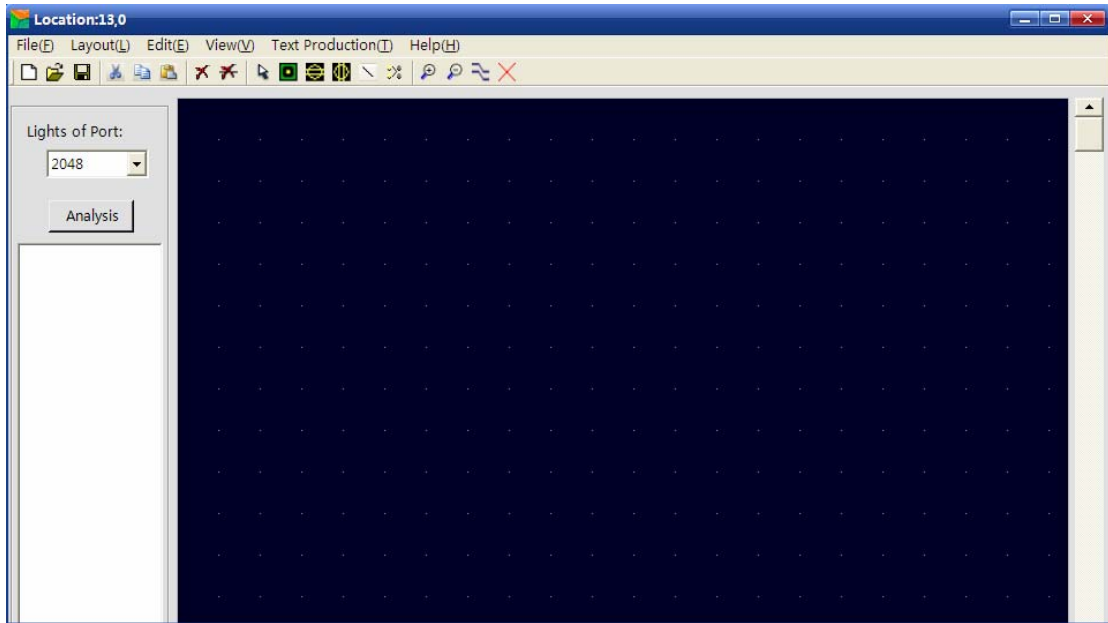


Click "OK", we into follow interface:

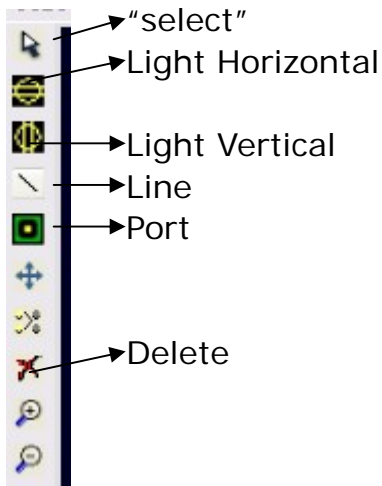



**Then, we need to set the light layout. We use the 200 light as the Example.**

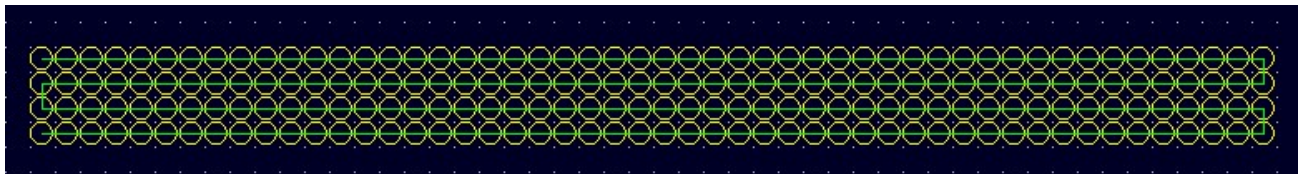
We click the "Project Config"—>"start manual layout"—> as follow interface:




**In top interface :**



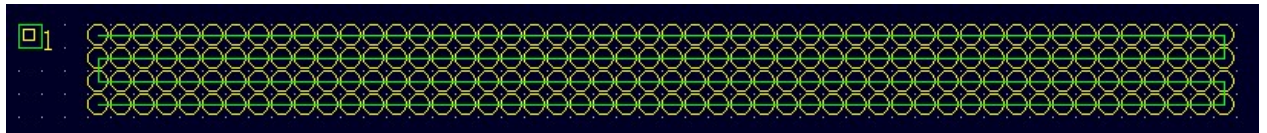
Because we use 200 lighter, then we click , and the mouse click ,and do not release the mouse , and dragging to follow:




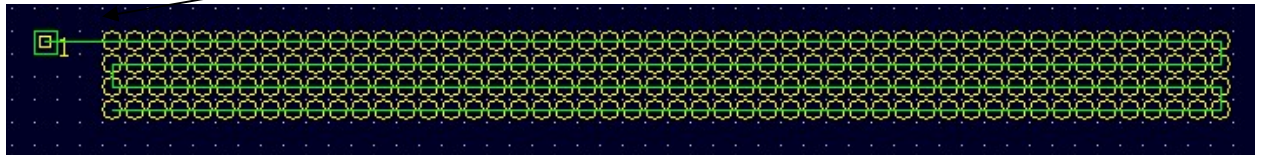
**We can see the Round is horizontal**

Then we need to click the , and click The upper left corner, follow:



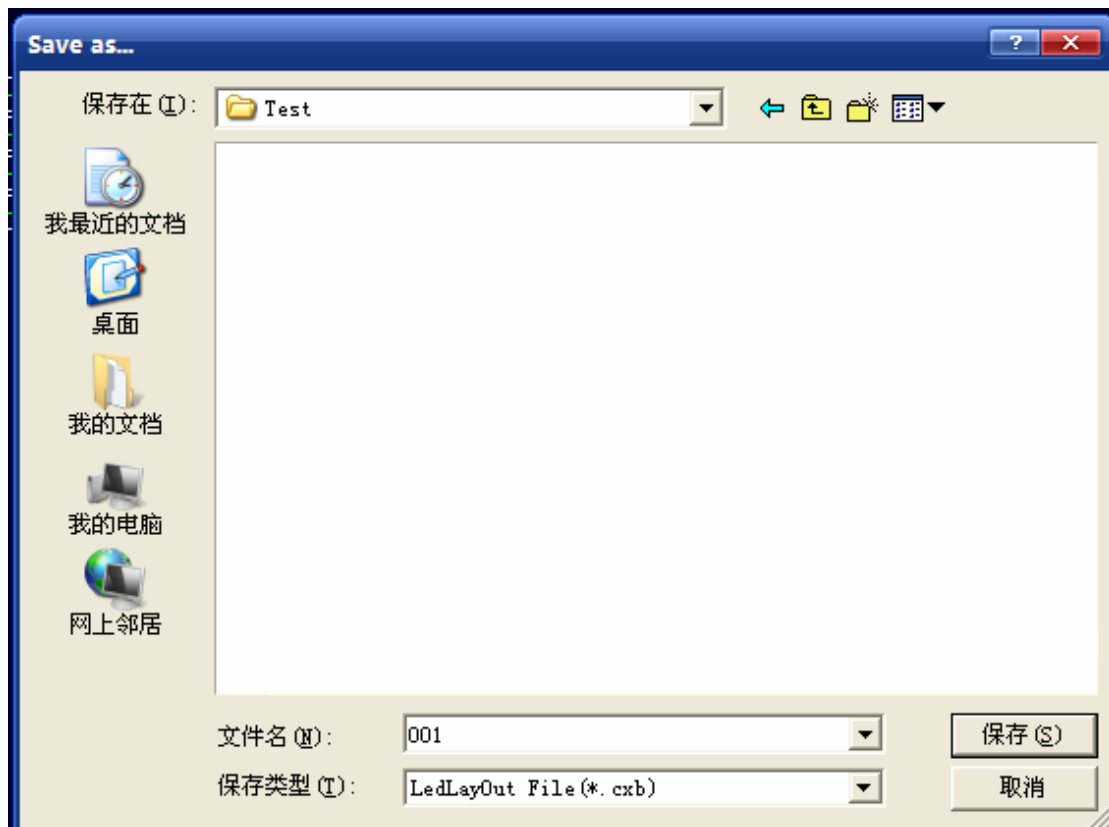


Then we need to click the , and connect the Port with the Round. Follow:



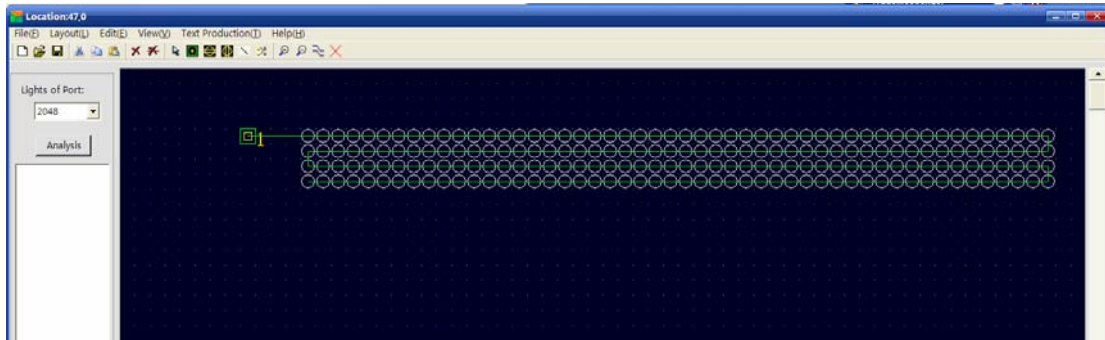
So we made the light layout about 200.  
Then we need to save it.

We click the  —> "save" —> follow:

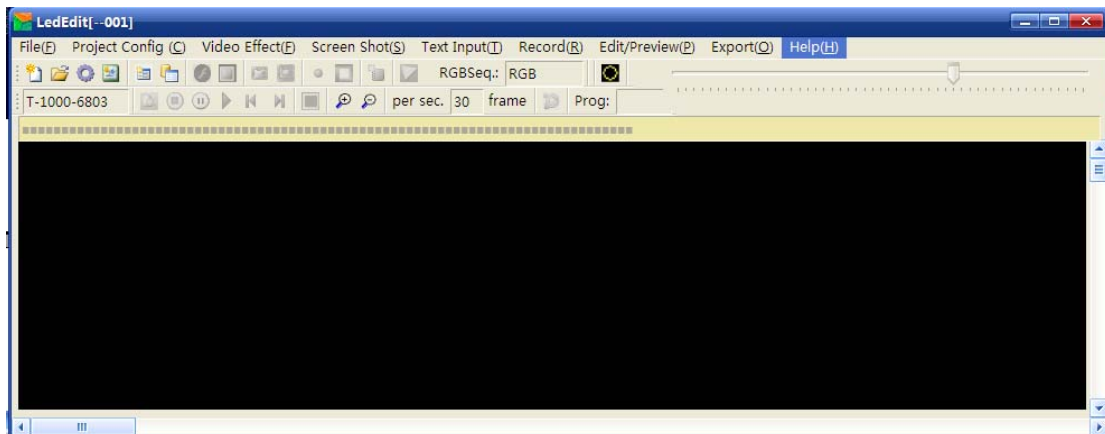


You can save where you want to save. ***It will generate the document of ".cxb".***

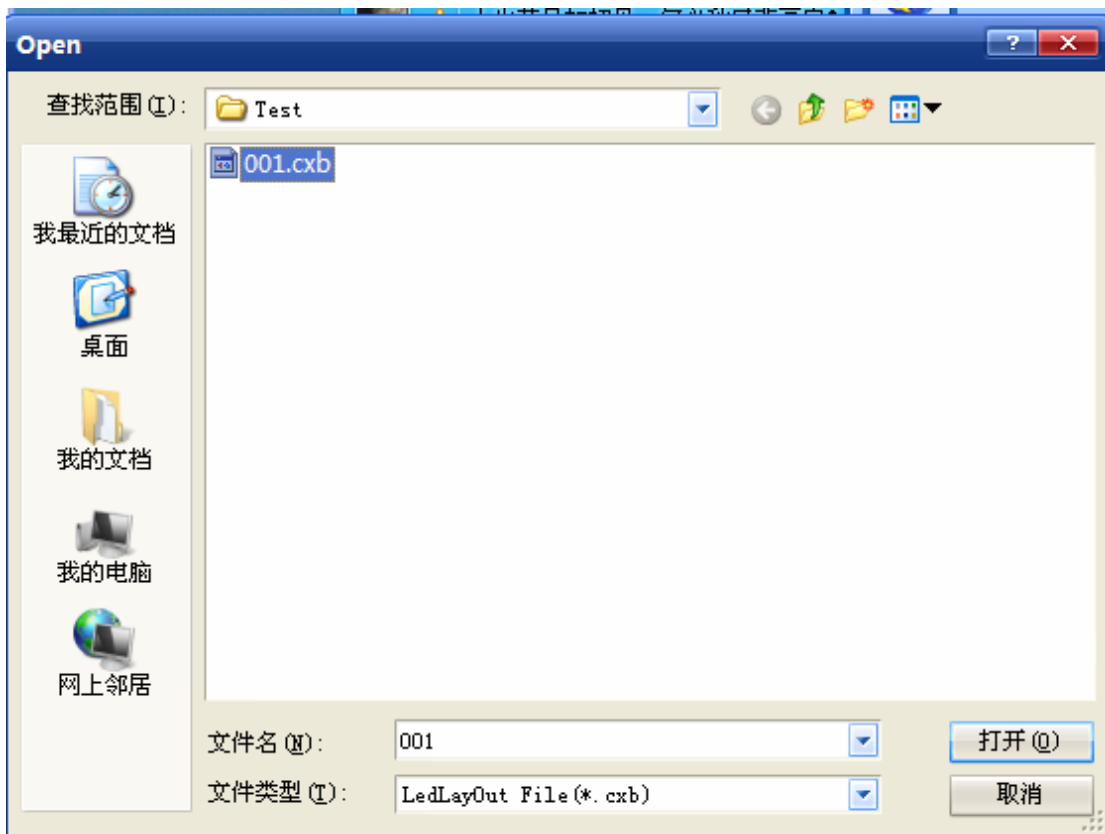
When we saved it, we can close the follow interface:



Then we back the interface:

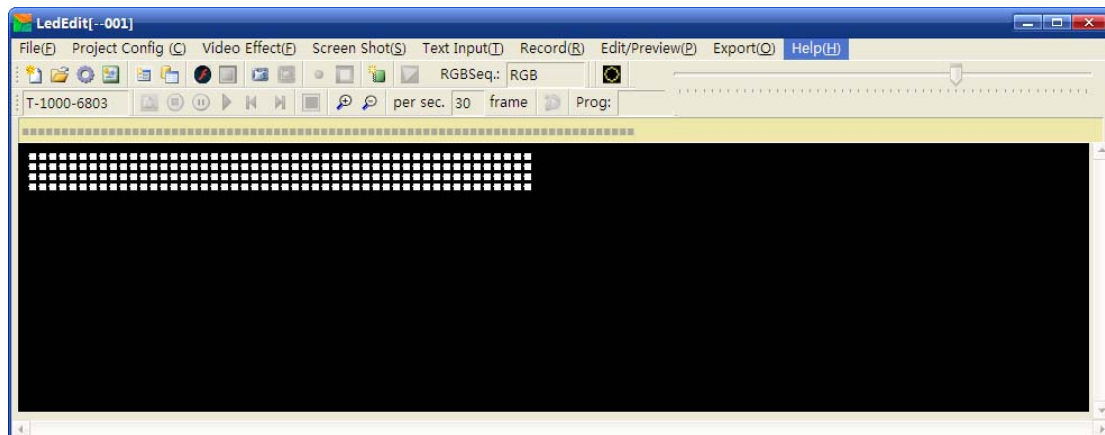


Then we click `Project Config (C)` —> "import(.cxb)" —> follow:

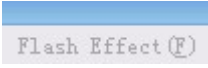


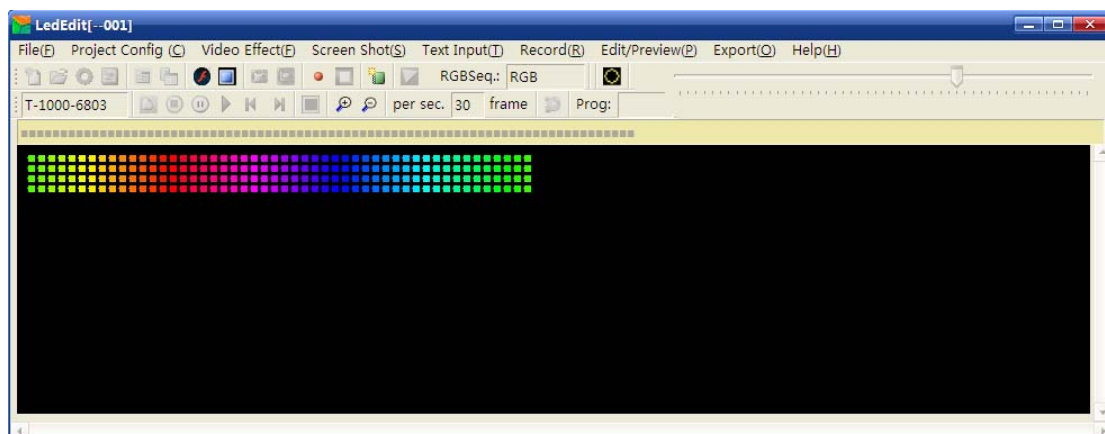
We need to find the document that we saved the document of ".cxb", and we need to open it.



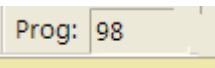
It will appear the follow interface:




The white point is we needs.

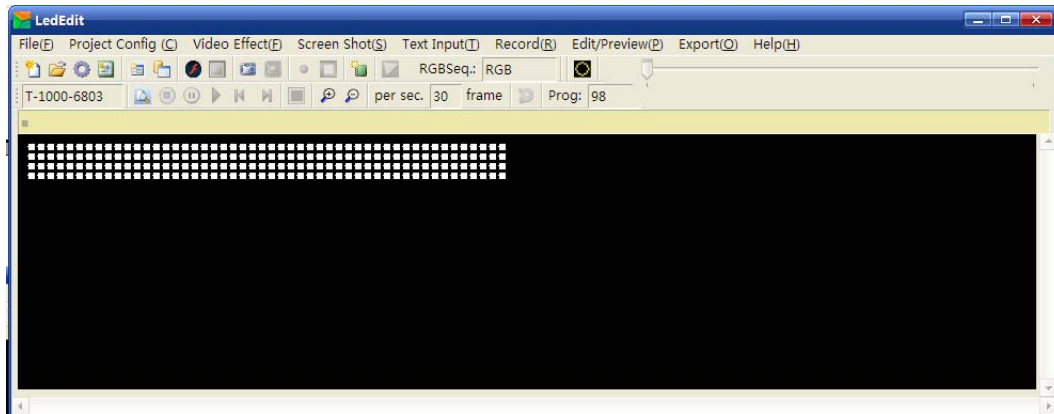
Then we click  , it have some program-effection, you can select one. So we select the " move right", it appear follow effection:

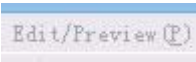



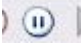
Then we must to record the effection, please click the  , to start recording. When we record the effection, we need to click the  to stop recording. The  denotes we have recorded 98 Frames.

Then we need to click the  , close the ".swf/default Effect". It back the interface:

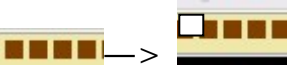
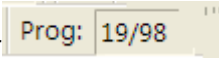




Then we can preview the effect that we made, which we can find where is wrong or right. Please click the .

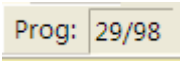
We can see the  running. If we want to stop it, we can click .

**If you found that had some wrong effect, we can delete it, follow:**

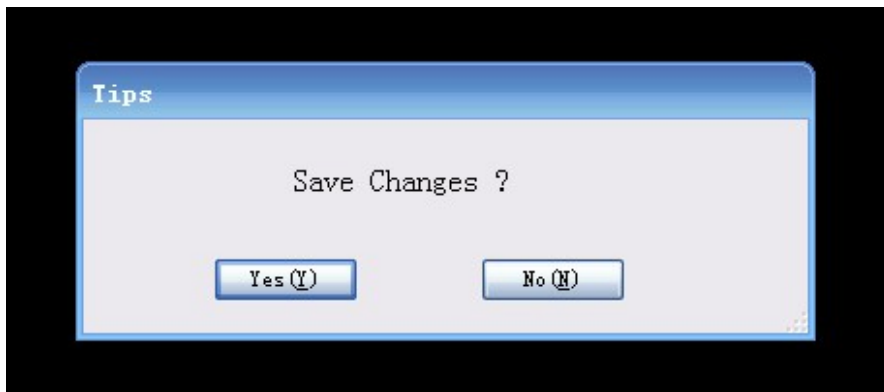
We click the , and the frame is appear , then we drag our mouse, follow:



And the frame is appear, which means that the frame was selected from 19 to 29 at the same time we click right of mouse—> "delete", So we deleted the wrong effect from 19 to 29 frames. The

 to , because we deleted 10 frames. Then

we click the  to follow interface:

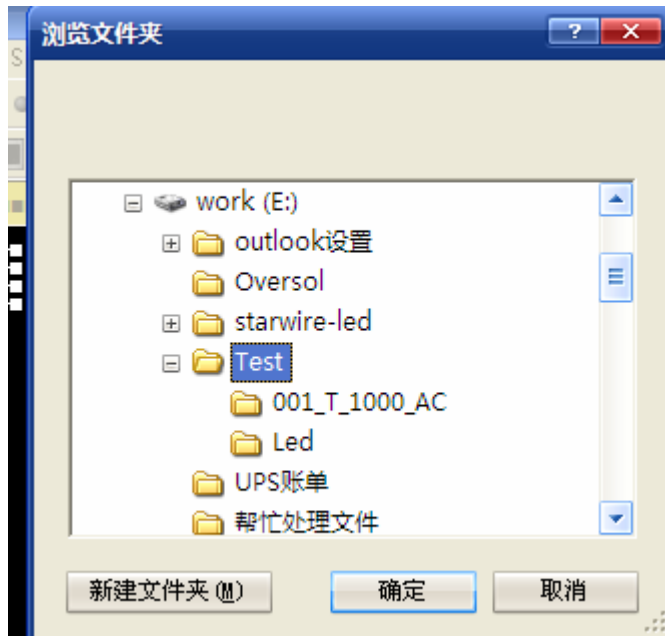


Then we click the , it is OK.



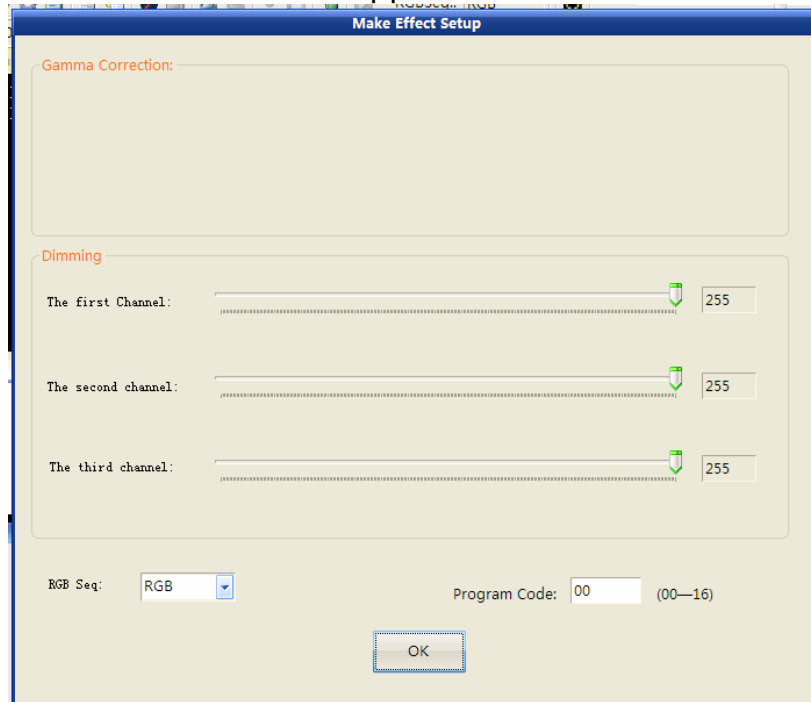
### 3,Export the effect program which we made.

Please click the  —> “export effect(.led)” to follow interface:



We can save the here where you want to save


Then the interface is appear follow:



Click “OK”

The all Steps is over , we can close the follow interface:

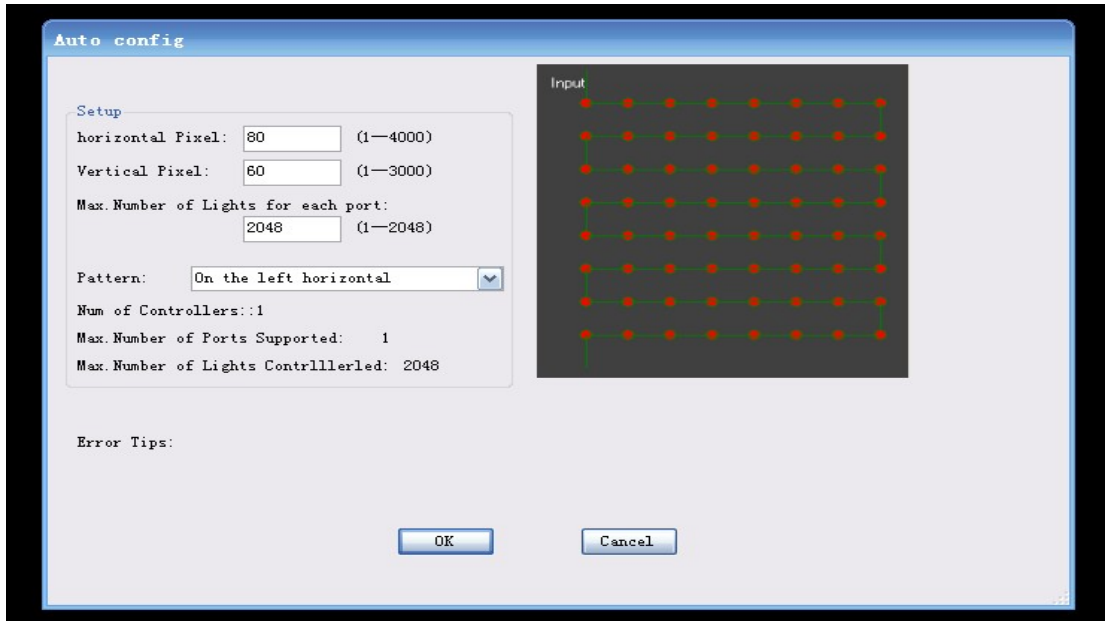


We can find the document  **001.led** **LED 文件** **21 KB** that we needs. and it need to copy to "SD card", but the SD card must to format to "FAT" Format.

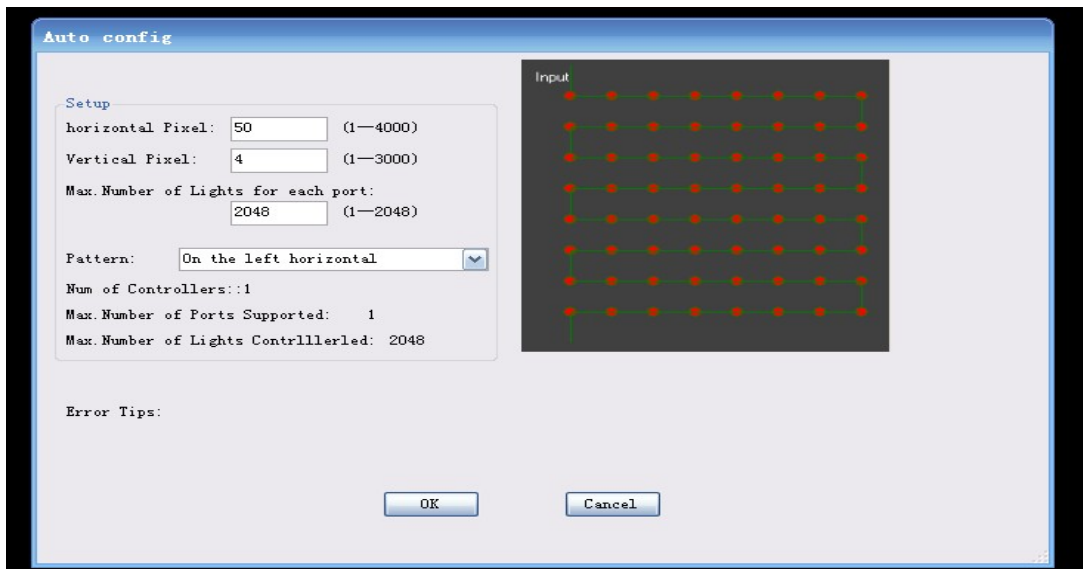
## 4, Other methods.

When we set the layout, we have the other two methods:

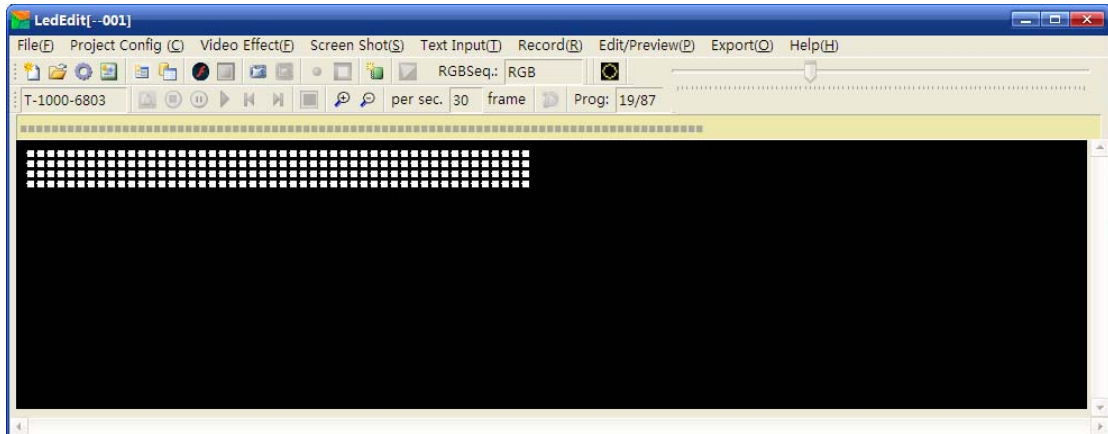
1. Click the **Project Config** —> "auto layout", follow interface:



We only change two parts. the  horizontal Pixel: →  
 horizontal Pixel: 50 , the  Vertical Pixel: 60 →  
 Vertical Pixel: 4 , so the interface was changed to this, follow:

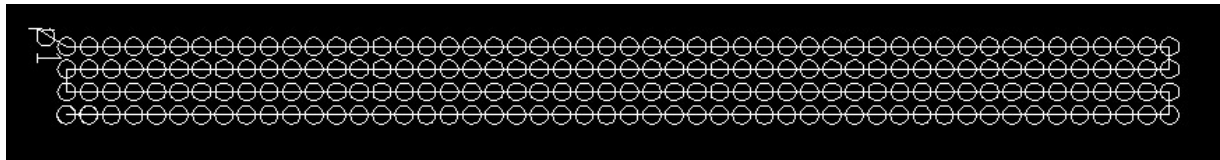


Click the "OK",  
The light layout is the same effect, follow:

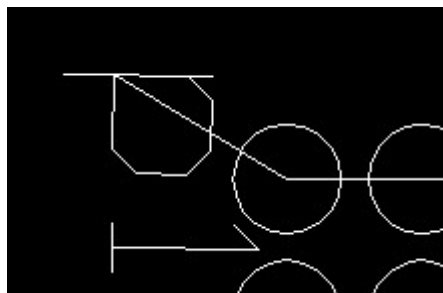


**2. We can use the "Auto CAD" software to set layout.**

When we use the "Auto CAD", we have some request, follow:



The round radius must is 1.0, and the round must be disjoint, and when we use beeline to connect with two rounds, the beeline must connect center of a circle. We need make the

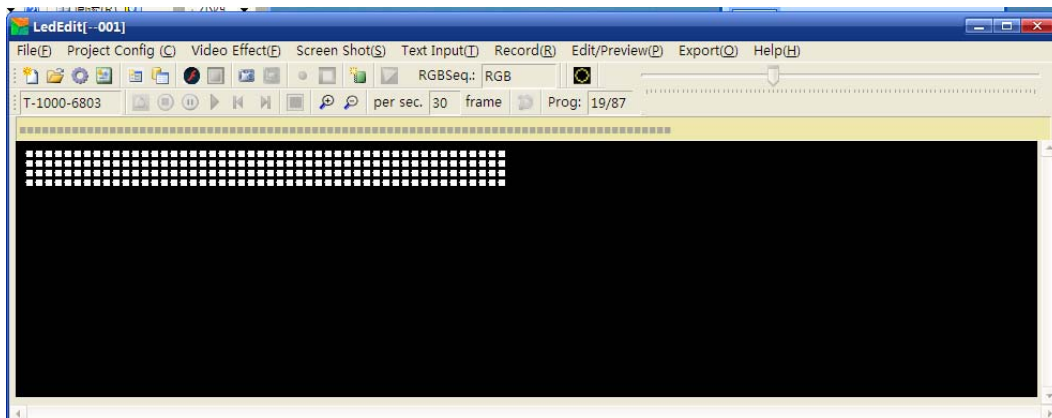


"P1" as the port, Follow:

**When we save the "Auto CAD" document, we must save it in ".dxf" format.**

Then we can import the "Auto CAD" document of ".dxf" format.

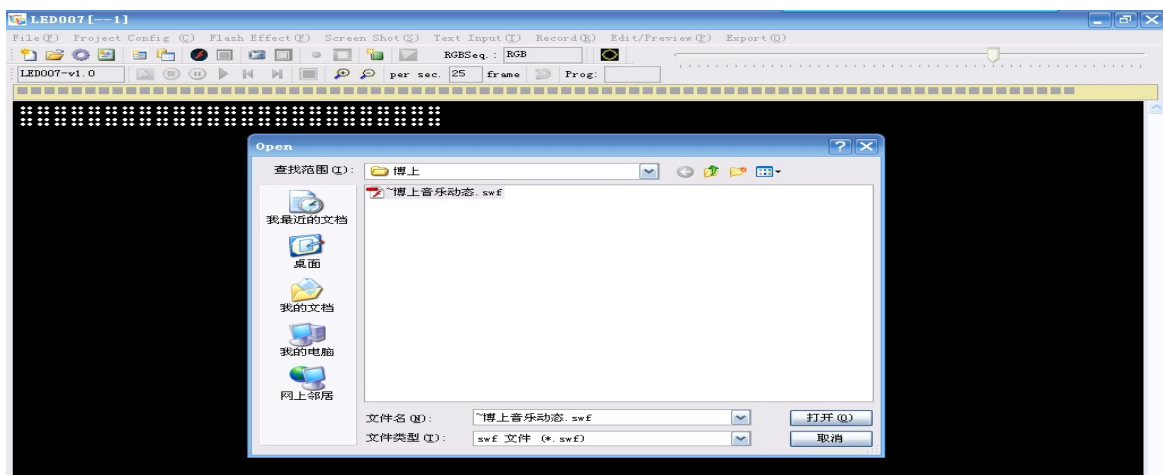
Click the `Project Config (C)` —>"import(.dxf)"—> follows:



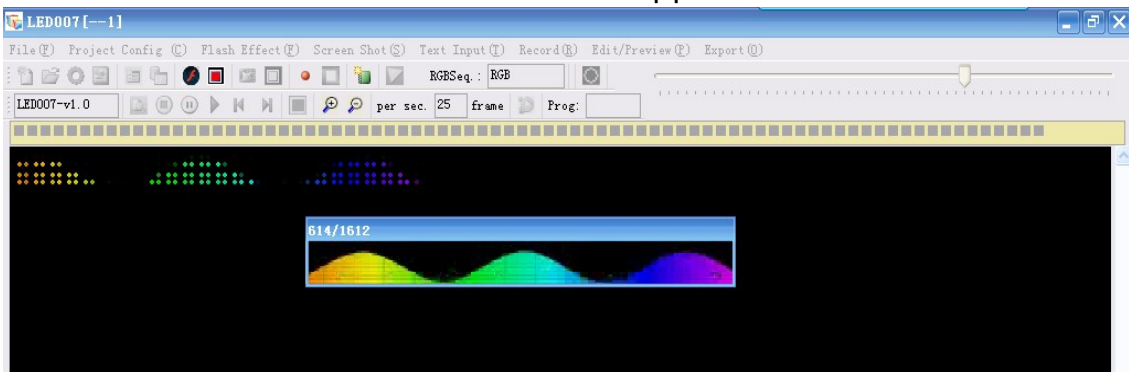
That effect is the same.

When we import the program-effect, we can import the "FLASH" that we made. But the "FLASH" format is the ".swf" format.

Click the **Flash Effect (F)** —> "Open(.swf)" —> follow interface:



Select the "FLASH", that is OK. It will appear follow :



The follow step is the same as above